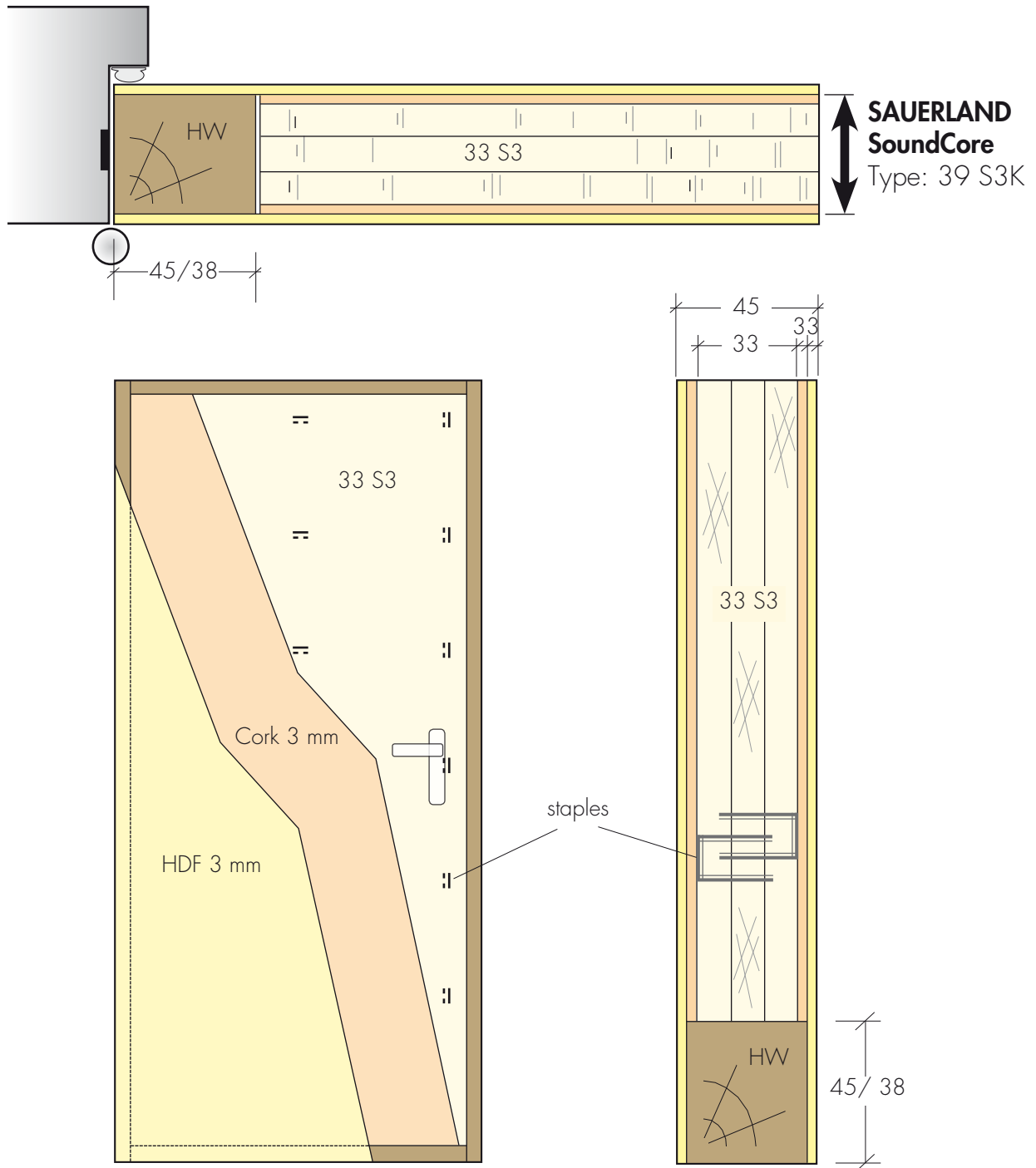


Construction Examples - 45 mm Door

30' Fire & 40 dB Sound Door



Construction:

- Core **SoundCore 39 S3K**
33 S3 : 3 x 11 VL
skin : cork 3 mm
- Stile /rails hardwood 'HW'
- Skin HDF 3 mm

Results :

- Weight approx. 25,6 kg/m²
- Stability heavy duty
- Fire: 30 min
- Sound 42 dB