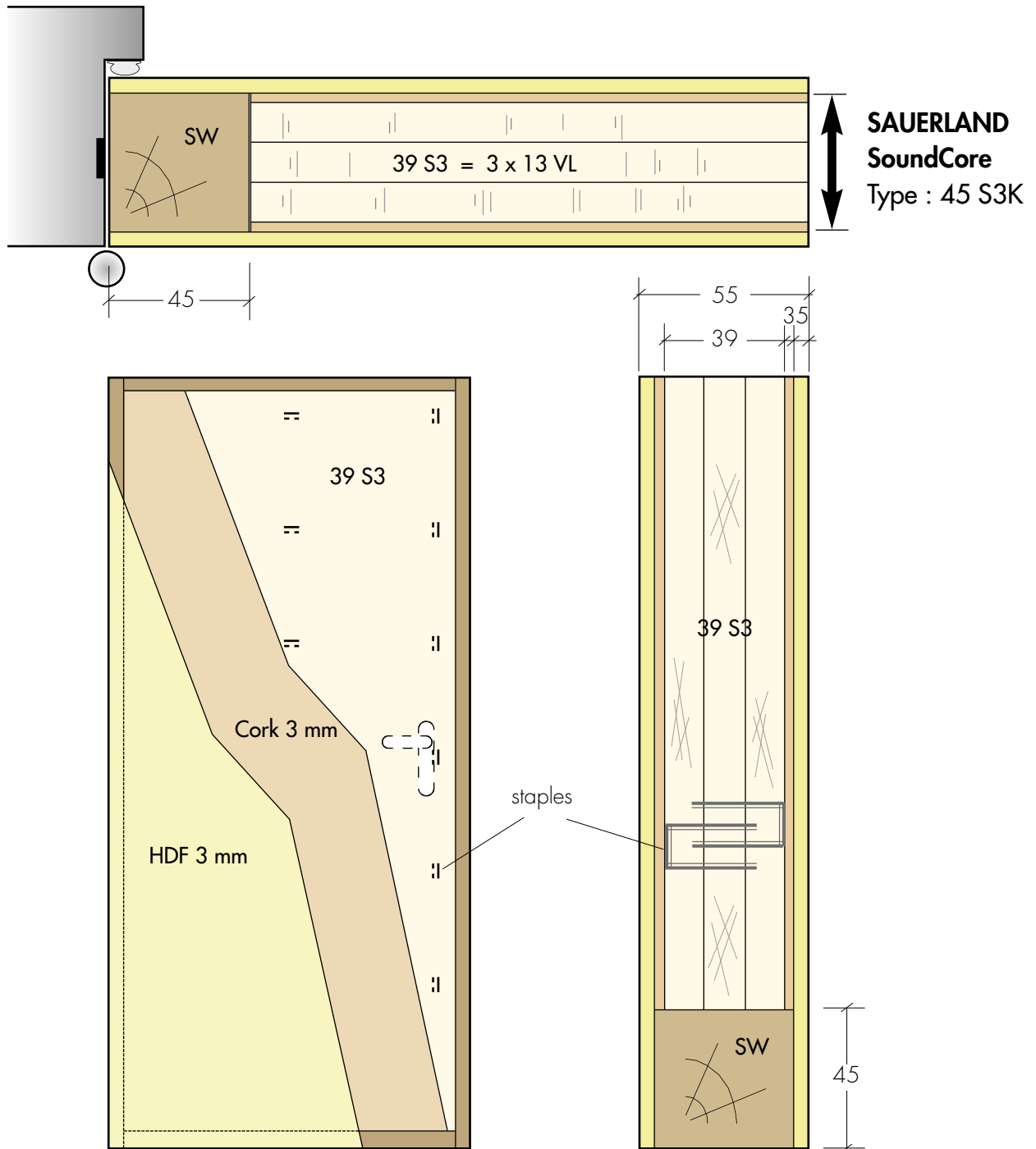


Construction Examples - 55 mm Door

30' Fire & 42 dB Sound Door



Construction :

- Core: **SoundCore 45 S3K**
39 S3 : 3 x 13 VL
skin : cork 3 mm
- Stile/ rails softwood 'SW'
- Door skin: HDF 5 mm

Results :

- Weight approx. 32,0 kg/m²
- Stability heavy duty
- Fire: 30 min
- Sound 42 dB